

## Infrared lamps for PET processing

Victory has a comprehensive range of linear quartz infrared lamps for industries using PET (PolyEthylene Terephthalate) in products such as food packaging and beverage containers.

The high quality and longevity of Victory PET lamps means they are used world-wide by many machine manufacturers.

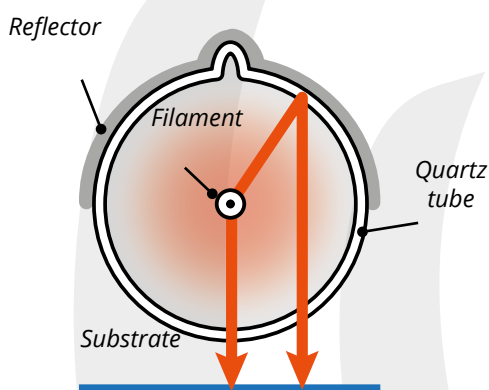
### Trusted by manufacturers

- High efficiency: reduced running cost
- Life 5000+ hours: reduced replacement cost
- Most energy-efficient reflector coating
- Compatible with all machine models
- Clear or ceramic coated
- Clear lamps compatible with external reflectors
- 1000W - 3000W



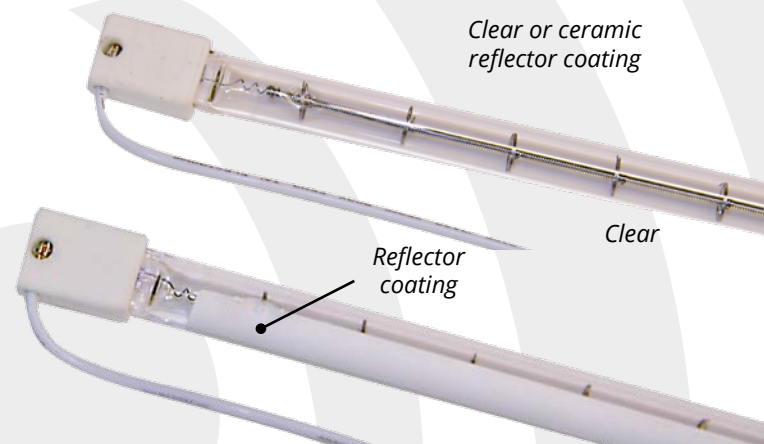
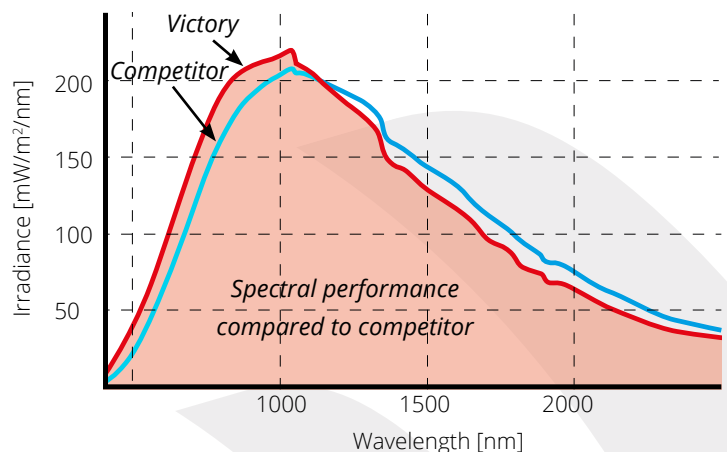
### Integrated reflectors

Victory PET lamps have a built-in ceramic reflector system that focuses infrared energy forward in the direction where it is required, reducing the loss of heat to the rear and improving efficiency. Infrared heat is emitted forward through the quartz tubing, or reflected off the back of the tube to then pass out through the front.



### Best performer

Victory infrared PET lamps provide more energy output per watt than their major competitors so will **save on energy cost**.





# Technical Data

## Infrared lamps for PET processing

### Range

Manufacturer	Wattage	Victory	Toshiba	Philips
SIDEL	2000W	54242055	JHC 235V 2000W 280 BH2	13213Z/98
	2500W	64402555	JHC 400V 2500W 315 BH	14106Z/98
	3000W	64403055	JHC 400V 3000W 315 BH	14111Z/98
KRONES	1200W	64231251	JHC 235V 1200W 155BfH1	14134Z/98
	1600W	64231652	JHC 235V 1600W 155BfH1	14135Z/98
	2500W	64402551	JHC 400V 2500W 280 BH	14143Z/98
	3000W	64403050	JHC 400V 3000W 280 BH	14144Z/98
SIG (KRUPP)	1200W	64231251	JHC 235V 1200W 155 BfH1	14134Z/98
	1200W	64141252	JHC 144V 1200W 155 BfH1	13561Z/98
	1200W	64141253	JHC 144V 1200W 155 JcH	13561Y/98
	1600W	64231652	JHC 235V 1600W 155 BfH1	14135Z/98
	1600W	64141653	JHC 144V 1600W 155 BfH	13568Z/98
	1600W	64141652	JHC 144V 1600W 155 JcH	13568Y/98
	2000W	54242053	JHC 235V 2000W 280 BfH4	14136Z/98
	2500W	64242550	JHC 235V 2500W 280 BfH3	14137Z/98
SIPA	2000W	64242525	JHC 235V 2000W 280 BfH	14103Z/98
	2000W	6423205N	JHC 230V 2000W 500 BfH	6423205N
	3000W	64243055	JHC 235V 3000W 280 BH	14121Z/98
	3000W	64233050	JHC 235V 3000W 700 BfH2	14107Z/98
SMI	2500W	64402580	JHC 400V 2500W 500 NH	N/A
ADS	1000W	64241052	JHC 235V 1000W 272 BfU1	13195Z/98
	2000W	64242052	JHC 235V 2000W 280 BfU1	N/A
SIDE	1000W	64241052	JHC 235V 1000W 270 BfU1	13195Z/98
	2000W	64242052	JHC 235V 2000W 280 BfU1	13213Z/98

We can also supply lamps for KHS



## VICTORY

Victory Lighting (UK) Ltd  
Unit 3, Eastman Way, Hemel Hempstead, Hertfordshire HP2 7DU  
www.victorylighting.co.uk | e sales@victorylighting.co.uk | t +44 (0)1442 215200

© Victory Lighting (UK) Ltd 2015  
The information contained in this literature is for general information purposes only. Victory Lighting (UK) Ltd endeavours to keep the information up to date and correct, but makes no representations or warranties of any kind, express or implied, about the completeness, accuracy, reliability, suitability or availability with respect to the information, products, services, or related graphics contained in this literature.

Victory Lighting (UK) Ltd accepts no liability for any loss or damage including without limitation, indirect or consequential loss or damage, or any loss or damage whatsoever arising from loss of data or profits arising out of, or in connection with, the use of this literature.

Distributed by